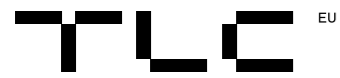


Stairways and platforms

for the steel and construction industries





We are able to predict the challenges in the next stages of construction and industrial project.

Keep calm due to our experience.

20 000 m² of production area

2005 a year when we started

15 branches in Europe

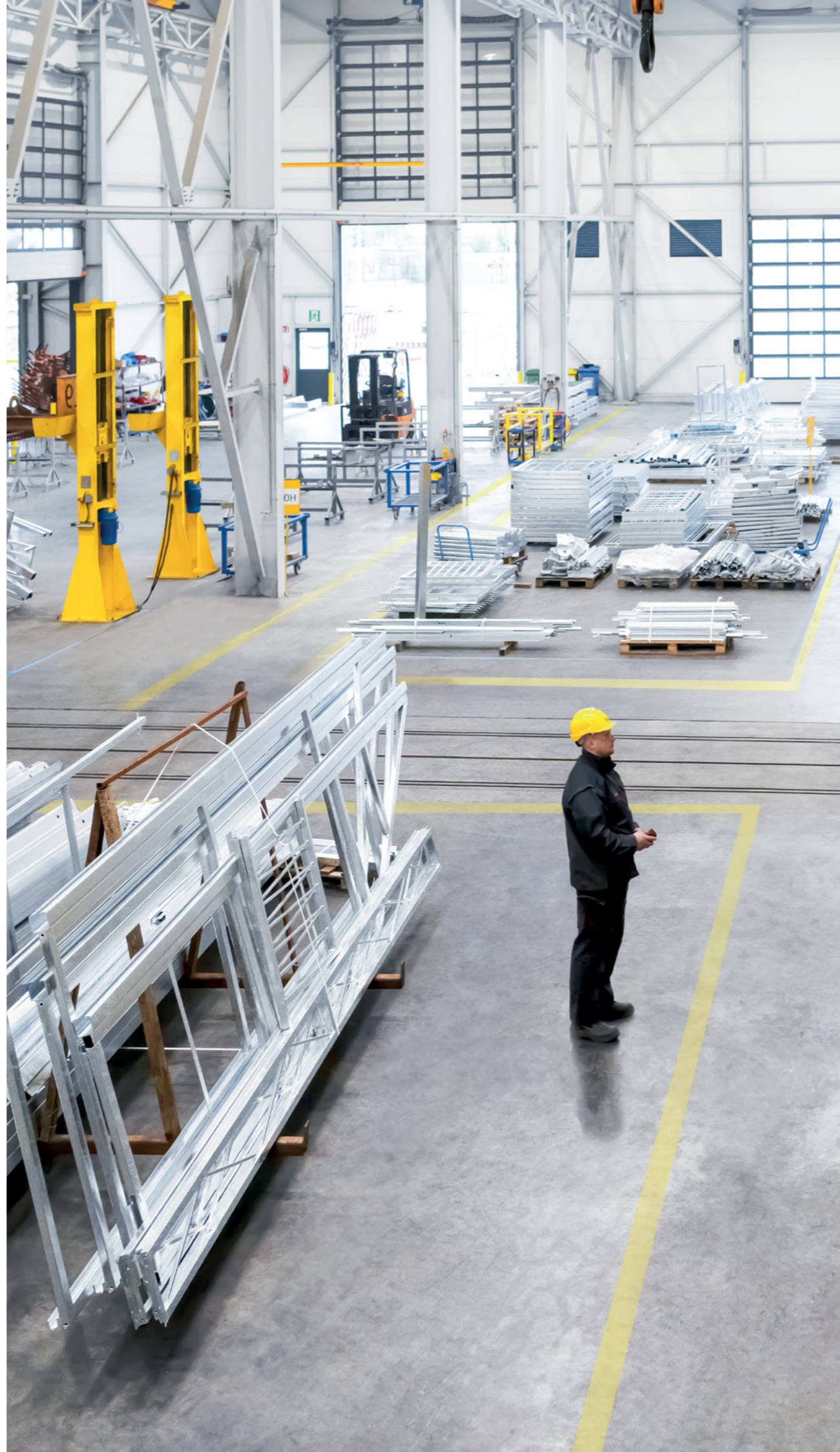
50 countries where our projects are located

Manufacturer, TLC Sp. z o.o., holds TÜV SÜD Polska certificate no. 2527 according to EN 1090-1 and PN-EN ISO 3834-2 certificate issued by TÜV SÜD Polska.

TLC's Production Plant has been certified with the Integrated Management System of Quality, Environment and OHS (ISO 9001/ ISO 14001/ ISO 45001) issued by Bureau Veritas Certification.



The information contained in this advertising material is provided for informational purposes only. The product specification should be checked against the technical documentation provided by the manufacturer.



| | |
|--|---------|
| TLC | 2 |
| General information | 4 - 5 |
| Industrial stairways straight | 6 - 7 |
| <ul style="list-style-type: none"> railing types step fillings | |
| Industrial stairways spiral | 8 - 9 |
| <ul style="list-style-type: none"> railing types step fillings | |
| Tank access platforms | 10 - 11 |
| Machinery access platforms | 12 - 13 |
| Storage tank stairs | 14 - 15 |
| <ul style="list-style-type: none"> helicoidal stairs staircases spiral stairs | |
| Our potential | 16 - 17 |
| Chosen realisations | 18 - 19 |

Corrosion protection

- Hot-dip galvanizing according to EN ISO 1461 (DIN 50976)
- Powder coating with RAL colours
- Duplex coat
- Spray painting according to EN ISO 12944-5
- Painting with fire protection paints

Construction materials

- Steel S235/S355
- Stainless steel 304/316



General information

INDUSTRIAL STAIRWAYS

Straight stairways - universal proposal well suited as an external or internal access to all types of buildings. A wide range of available solutions allows the stairway selection meet the highest requirements and standards depending on its purpose, ensuring functionality and safety in use. Simple construction makes the stairs easy to assemble.

Spiral (helical) stairways - lightweight, innovative perfectly fit both new and renovated buildings. The advantage of the construction is reduction of the area necessary to install it. Spiral construction of stairs prevents from falling as a result of accidental slip - the natural protection is the railing located directly in front of the user.

STEEL PLATFORMS

They are used in almost every branch of industry. TLC company produces platforms in accordance with European regulations or appropriate for the country of destination.

Tank access platforms - horizontal platforms mounted on, around or between large-size tanks, structurally connected with them.

Machinery access platform - a platform or a set of platforms that may be present in a multi-storey system.

STORAGE TANK STAIRS

Steel storage tank/ silo stairs are a reliable construction that allow for safe access to tank's roof. Modern solutions and well-thought out system of fixings guarantee safety of users and easy assembly.

The steel silo stairs are available in a number of variants:

- Helicoidal stairs
- Staircases
- Spiral stairs

Railing types

Industrial acc. to EN-ISO 14122

- Handgrip and railposts made of circular pipe $\varnothing 42,4$
- Middle bar made of circular pipe $\varnothing 26,9$
- Equipped with kickplate - 100 or 150 high, #1,5 or #2 thickness depending on width of railing



Children-safe

- Handgrip made of circular pipe $\varnothing 42,4$
- Railposts made of circular pipe $\varnothing 42,4$
- Two followers made of circular pipe $\varnothing 26,9$
- Filling of vertical round bars $\varnothing 12$



Balustrade with horizontal filling

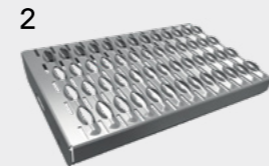
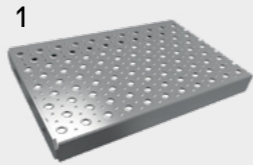
- Handgrip made of circular pipe $\varnothing 48,3$
- Railposts made of square profile 50x50
- Filling of horizontal circular pipe $\varnothing 25$



Step fillings

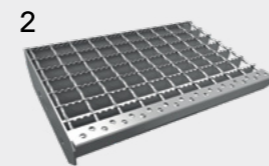
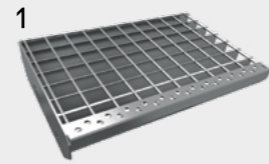
1 Plank grating 2 Serrated plank grating (type usa)

- Hot dip galvanized
- Slip resistance DIN 51130: R12



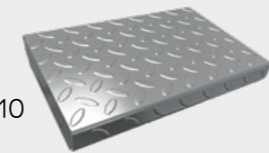
1 Welded grating 2 Serrated welded grating

- Mesh 34 x 38
- Hot dip galvanized
- Slip resistance DIN 51130: R10 (1), R11(2)



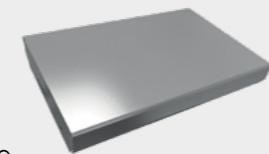
Checker plate

- Hot dip galvanized
- Slip resistance DIN 51130: R10



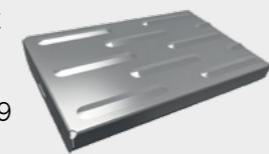
Steel plate

- Hot dip galvanized
- Powder painted
- Slip resistance DIN 51130: R9

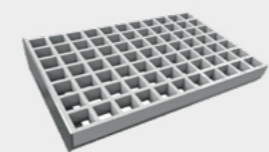


TLC-GES type profiled plank

- Hot dip galvanized
- Slip resistance DIN 51130: R9



TWS / GRP grating



- Main application is providing access in industrial buildings (warehouses, tanks, storage silos, manufacturing facilities), residential buildings and public utility buildings (shopping centres, sports facilities)
- High quality of materials ensuring durability and resistance to mechanical damage
- Corrosion protection ensuring resistance for required corrosivity class present both outside and inside buildings
- Guaranteed safety of operation due to different types of fillings of steps and railings
- Lightweight construction allows for quick and easy assembly and disassembly

Important

TLC implements projects using standard materials available on the market. This allows for substantial shortening the term of implementation and cost optimization. On customer's request, projects can be implemented with the use of non-standard materials and solutions.

Railing types

Industrial

- Rail posts made of square profile 30×30
- Handgrips made of pipe 42,4



Industrial

acc. to EN-ISO 14122

- Rail posts made of square profile 30×30
- Handgrips made of pipe 42,4
- Additional follower flat 40×3



Children-safe

- Rail posts made of square profile 30×30 + vertical round bars ø10mm
- Handgrips made of pipe 42,4



Pinnaracke

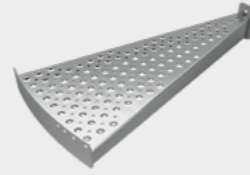
- Rail posts made of square profile 30×30
- Handgrips made of pipe 42,4
- Filling made of 2 pipes 21,3 and vertical round bars ø10



Step fillings

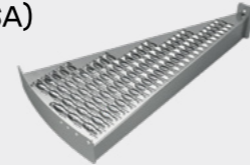
Plank grating

- Hot dip galvanized
- Slip resistance DIN 51130: R12



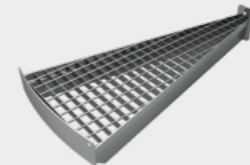
Serrated plank grating (type USA)

- Hot dip galvanized
- Slip resistance DIN 51130: R12



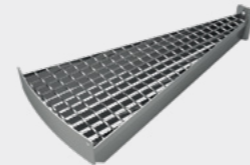
Welded grating

- Mesh 34 × 38
- Hot dip galvanized
- Slip resistance DIN 51130: R10



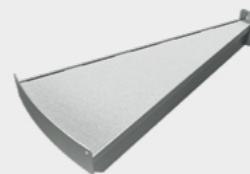
Serrated welded grating

- Mesh 34 × 38
- Hot dip galvanized
- Slip resistance DIN 51130: R11



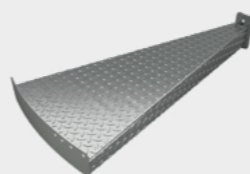
Prepared for filling with carpet/ tiles/concrete screed

- Hot dip galvanized
- Powder painted
- Slip resistance DIN 51130: R9



Checker plate

- Hot dip galvanized
- Slip resistance DIN 51130: R10



- Main application is providing access for industrial buildings (warehouses, tanks, storage silos, manufacturing facilities), residential buildings, and public utility buildings (shopping centres, sports facilities)
- High quality of materials ensuring durability and resistance to mechanical damage
- Corrosion protection ensuring resistance for required corrosivity class present both outside and inside buildings
- Guaranteed safety of operation due to different types of fillings of steps and railings
- Lightweight construction allows for quick and easy assembly and disassembly

Important

TLC implements projects using standard materials available on the market. This allows for substantial shortening the term of implementation and cost optimization. On customer's request, projects can be implemented with the use of non-standard materials and solutions.



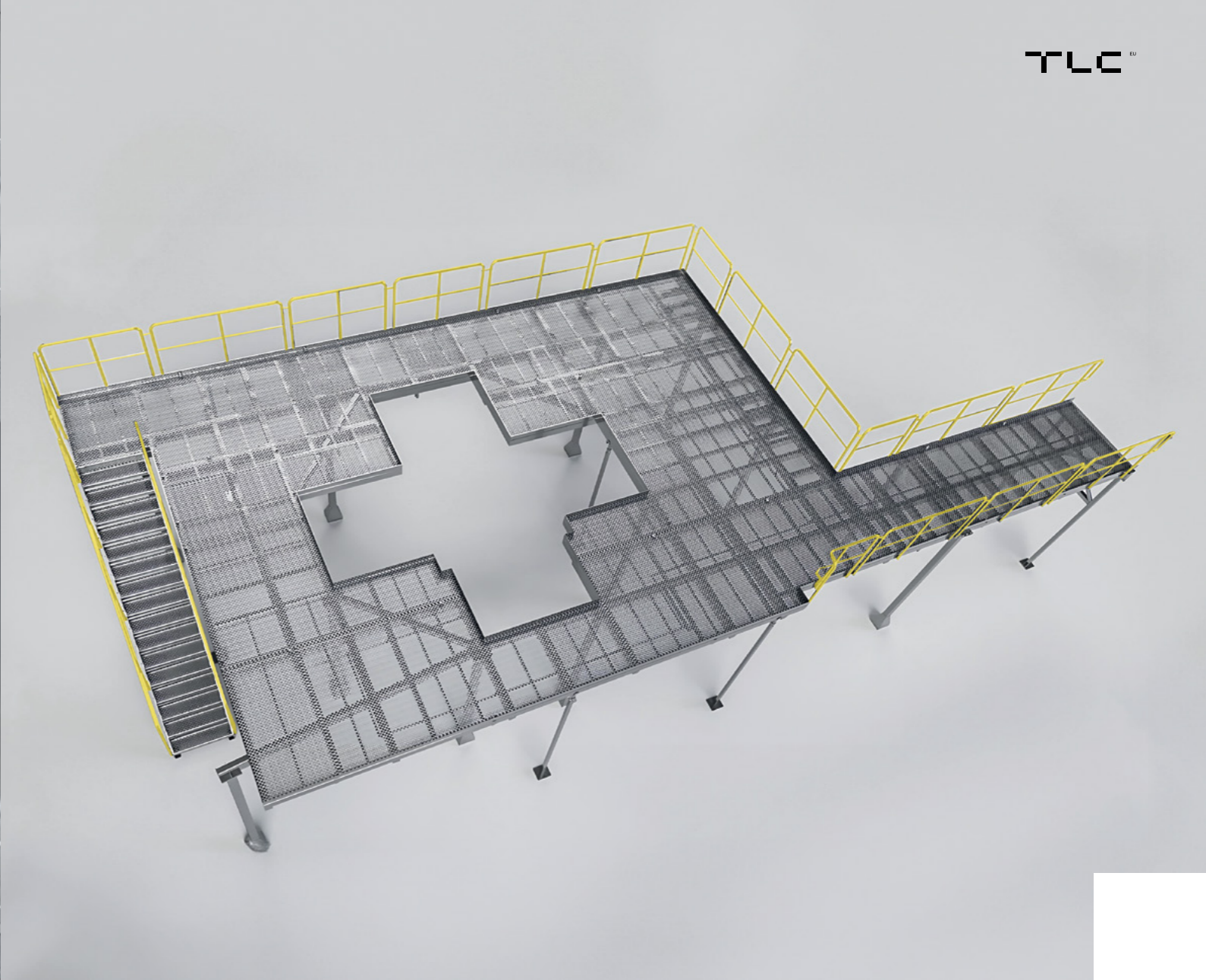
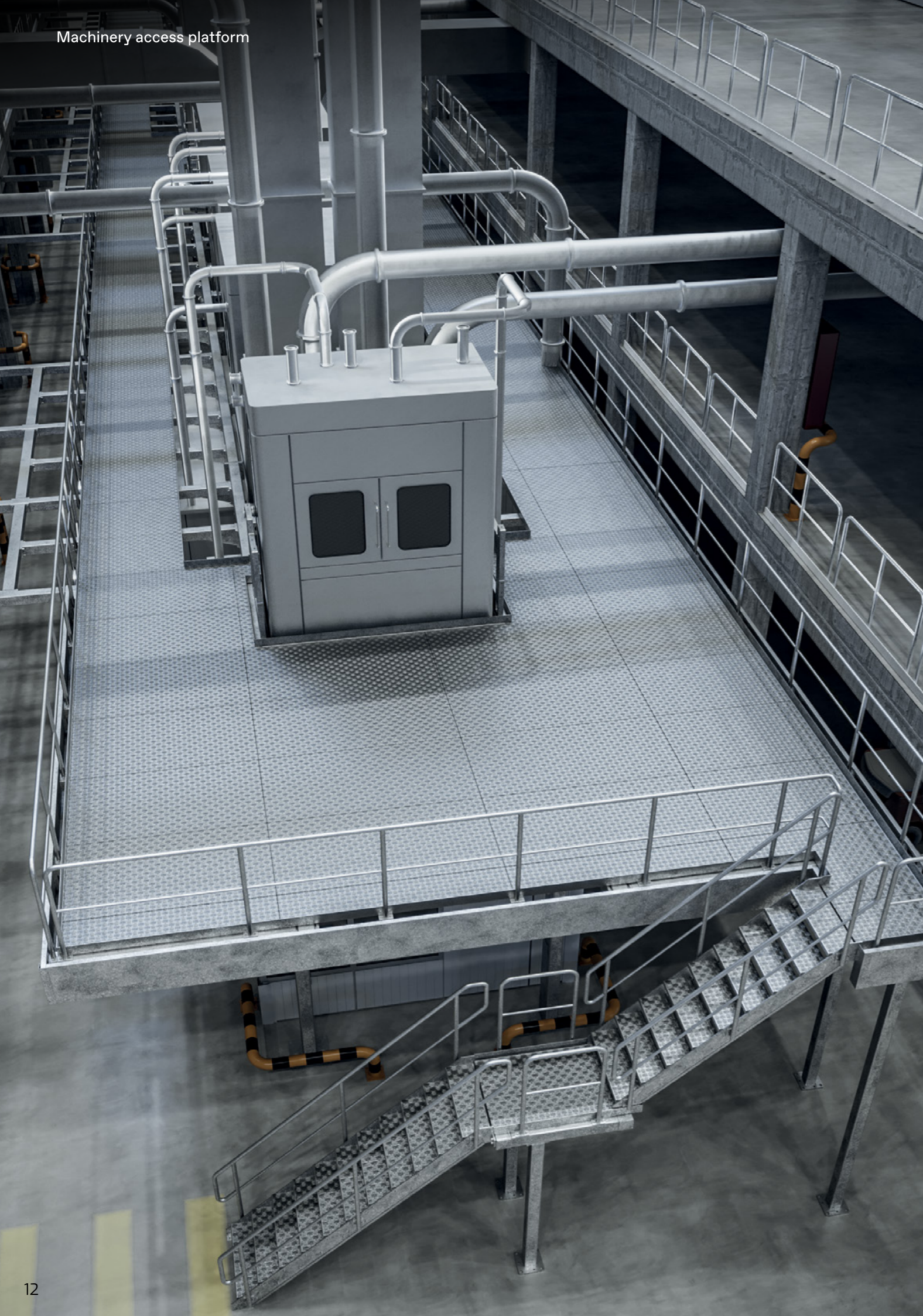
- The main function of tank access platforms is to provide a communication path for servicing the tanks
- Depending on the needs (access, communication), these platforms can be placed on, around and between the tanks
- Implementation in accordance with the documentation prepared by TLC designers or documentation provided by the Client
- Consultation of regulations and standards, as well as professional assembly services
- The additional equipment depends on usage conditions, including railings, steel stairs, technical ladders, and others



Compliance with construction law



Possibility of modular extension of the platform



- The use of internal platforms makes it possible to increase the operational volume inside the hall without interfering with the building cubature and without incurring the costs associated with its expansion
- Maintenance platforms for machines and assembly lines are a platform or a set of platforms that can be in a multi-storey system, designed to: ensure maximum use of working surface, support the technological line, ensure appropriate and safe access to higher parts of machines, optimize and improve the production process
- Implementation in accordance with the documentation prepared by TLC designers or documentation provided by the Client
- Consultation of regulations and standards, as well as professional assembly services
- The additional equipment depends on usage conditions, including railings, steel stairs, technical ladders, and others

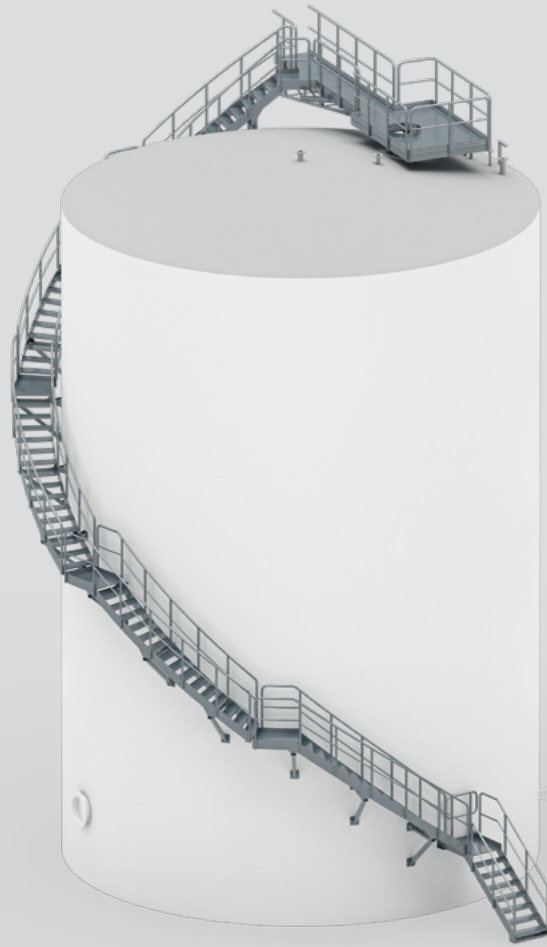


Compliance with health and safety regulations

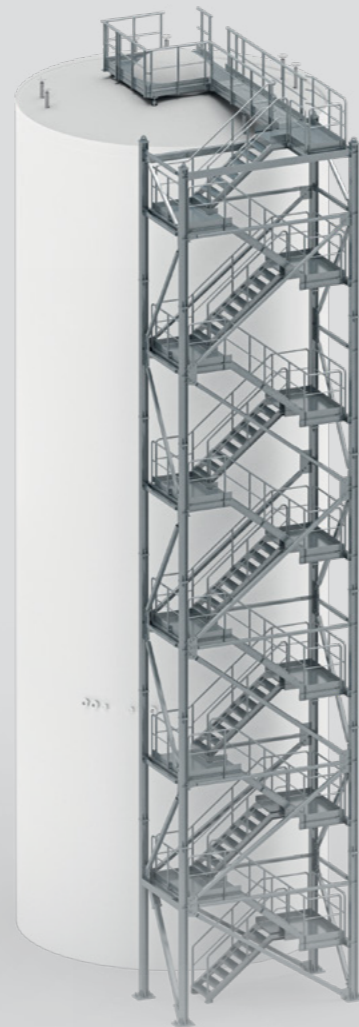


Possibility of modular extension of the platform

Helicoidal stairs



Staircases



Spiral stairs



- High safety standards - Equipped with barriers on both sides and anti-slip fillings on steps minimize the possibility of accident
- High durability against weather conditions - High capacity steel storage tank and silo stairs are hot-dip galvanized according to EN ISO 1461 standard and spray painted with anti-corrosion (according to standard's group EN ISO 12944), fireproof paints or powder coated
- Compliance with building regulations - Our priority is to manufacture steel constructions in accordance with current building regulations. We also focus heavily on the stability and safety of our products, resulting in a constantly growing customer base
- Multiannual experience - Expanding TLC Group's offering with the Nordweld Tank Building System has allowed us to expand our knowledge of storage tank specifications, enabling us to offer comprehensive services including tank construction with complete communication systems for both single and multiple tanks or silos used to store solid or liquid materials

Important

In addition to steel external stairs used for silos and storage tanks, we offer comprehensive investment services in terms of project planning, production, and assembly of complete communication systems



Our potential

Selected machines:

- Welding robots - MAG welding
- Lasers - cutting profiles, pipes and sheets
- Technological lines for galvanizing and for powder coating
- Plasma - sheets cutting
- CNC pipe bender
- CNC press brake
- Automatic multi-spot welder for openwork



We care for life :

The points mentioned above represent only a small fraction of all pro-ecological activities that have been successively implemented since 2018. These efforts have resulted in tangible benefits, including:

- Competitive prices of manufactured products - **over 50% of the energy comes from solar power**
- Reduced CO2 emissions
- Reduced energy costs
- Minimized amounts of harmful waste



replacement of 100% of the car fleet with electric and hybrid vehicles



using power from photovoltaic panels



implementing an automatic lighting system and heat pump system



adopting an electronic invoicing system



designing gadgets and marketing materials made of recycled plastics

Chosen realisations



Poland, A/3963



Slovakia, 9/3763



Poland, 8/2575



Uruguay, A/4197



Sweden, 2012/55



Sweden, 2013/88



France, 9/3748



Uruguay, A/4197



Norway, 2012/16



POLAND

TLC

+48 505 140 140
info@tlc.eu
tlc.eu

TLC Rental

+48 734 140 140
info@tlcrental.pl
tlcrental.pl

TLC Nordweld

+48 600 151 551
info@nordweld.eu
nordweld.eu

INTERNATIONAL CONTACT

Inter TLC

+44 2033 690 080
info@intertlc.co.uk
intertlc.co.uk

SWEDEN

Inter TLC AB

+46 70 525 99 18
info@intertlc.se
intertlc.se

GERMANY

Inter TLC GmbH

+49 5147 709 00 72
info@intertlc.de
intertlc.de

FRANCE

Inter TLC

+33 6 78 93 84
info@intertlc.fr
intertlc.fr

